

---

# LIQUID METAL

THE SERGIO GUTIERREZ COLLECTION

---

The designer Sergio Gutierrez developed a patented technique for creating a very wearable metal mesh from ball chain. This was the origin of the **LIQUID METAL COLLECTION**. His first designs were a silky line of bracelets. They were an immediate success due to their bold & innovative designs and to the uniquely sensuous experience of soft metal on skin. Gutierrez's designs have evolved from those first bracelets into skirts, vests and entire dresses without losing their distinctive ball chain appearance that is the trademark of his exciting and innovative collection.

Over the past decade the **LIQUID METAL COLLECTION** has enjoyed a continually growing number of patrons. At the heart of all Gutierrez's designs is the sensuous and unique mesh that is both contemporary and timeless. In this catalog Gutierrez has brought together a stunning collection of stirring and seductive designs that inevitably satisfy the wearer and stimulate the curiosity of the observer.

**Benjamin Paul**  
*Fashion Critic*

---

## INDEX

---

|                                |          |
|--------------------------------|----------|
| LIQUID ROOTS . . . . .         | 7 - 26   |
| Bracelets . . . . .            | 7 - 14   |
| Accessories . . . . .          | 15 - 26  |
| <br>LIQUID CLASSIC . . . . .   | 27 - 64  |
| Bracelets . . . . .            | 29 - 42  |
| Snake Collection . . . . .     | 43 - 45  |
| Necklaces . . . . .            | 46 - 48  |
| Earrings & Rings . . . . .     | 49 - 50  |
| Mini Collection . . . . .      | 51 - 52  |
| Purses . . . . .               | 53 - 57  |
| Backpack . . . . .             | 58       |
| Belts . . . . .                | 59 - 62  |
| Chokers . . . . .              | 63 - 64  |
| <br>LIQUID LEATHER . . . . .   | 65 - 80  |
| Bracelets . . . . .            | 67 - 70  |
| Belts . . . . .                | 71 - 72  |
| Bags . . . . .                 | 73 - 80  |
| <br>LIQUID MICROCHIP . . . . . | 81 - 90  |
| Bracelets . . . . .            | 83 - 84  |
| Accessories . . . . .          | 85 - 90  |
| <br>LIQUID FASHION . . . . .   | 91 - 106 |
| <br>BIOGRAPHY . . . . .        | 107      |
| <br>CONTACTS . . . . .         | 108      |





LIQUID ROOTS

RG



# BRACELETS

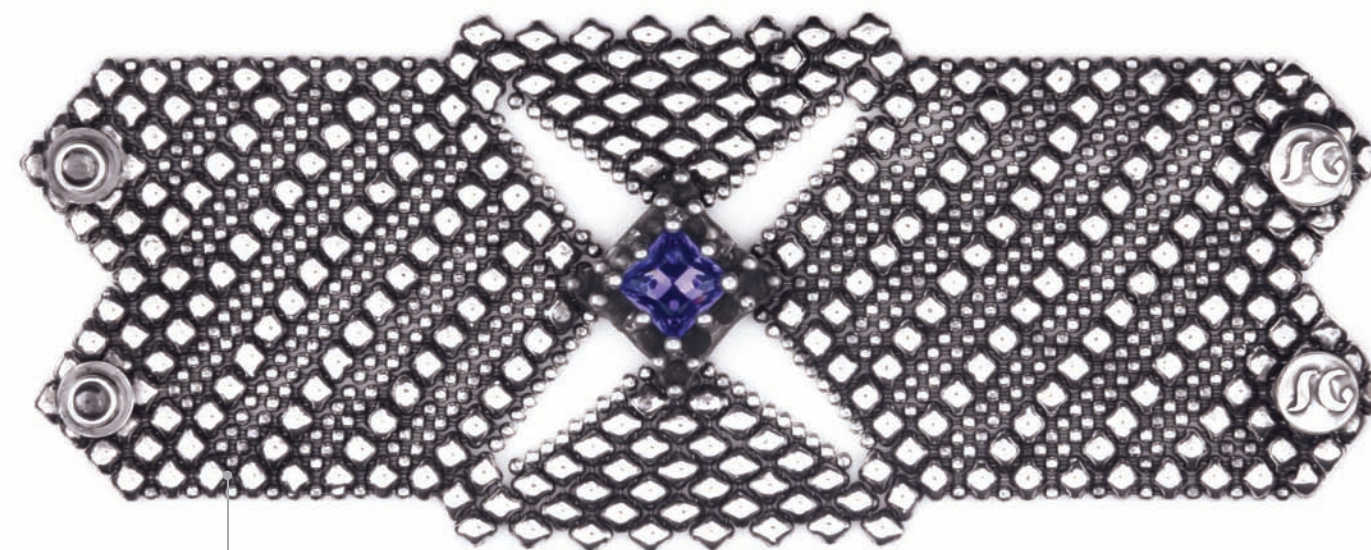
All Liquid Roots collection items are available exclusively in antique silver finish.  
This collection uses Liquid Wave Solder in a unique 'flame fusion' technique.



RTB1



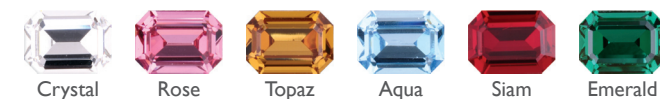
RTB2



RTB3



RTB4







RTB5

- Zirconia
- Emerald
- Peridot
- Topaz
- Pink Tour
- Ruby
- Aqua
- Blue. Sa



RTB6

- Zirconia
- Emerald
- Peridot
- Topaz
- Pink Tour
- Ruby
- Aqua
- Blue. Sa



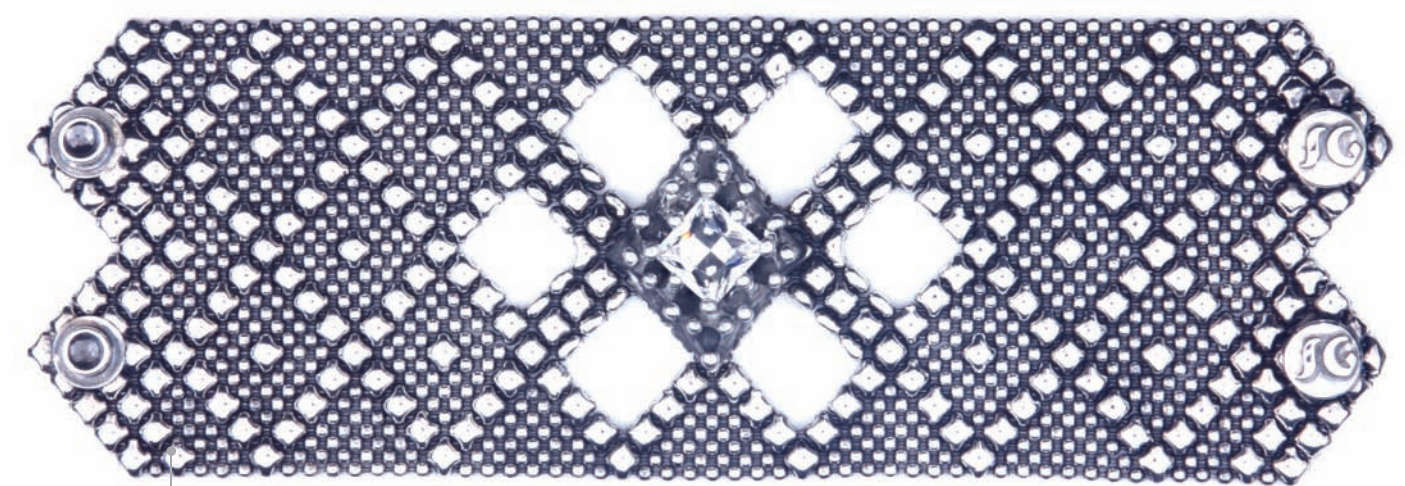
RTB7

- Crystal
- L. Amethyst
- Erinite
- Tanzanite



RTB8

- Zirconia
- Emerald
- Peridot
- Topaz
- Pink Tour
- Ruby
- Aqua
- Blue. Sa



RTB9

- Crystal
- L. Rose
- Aqua
- Tanzanite



RTB11

- Zirconia
- Emerald
- Peridot
- Topaz
- Pink Tour
- Ruby
- Aqua
- Blue. Sa



RTB12

- Crystal
- Rose
- Topaz
- Aqua
- Siam
- Emerald





RTB13

- Zirconia
- Emerald
- Peridot
- Topaz
- Pink Tour
- Ruby
- Aqua
- Blue. Sa



RTB16

- Crystal
- L. Rose
- Aqua
- Tanzanite



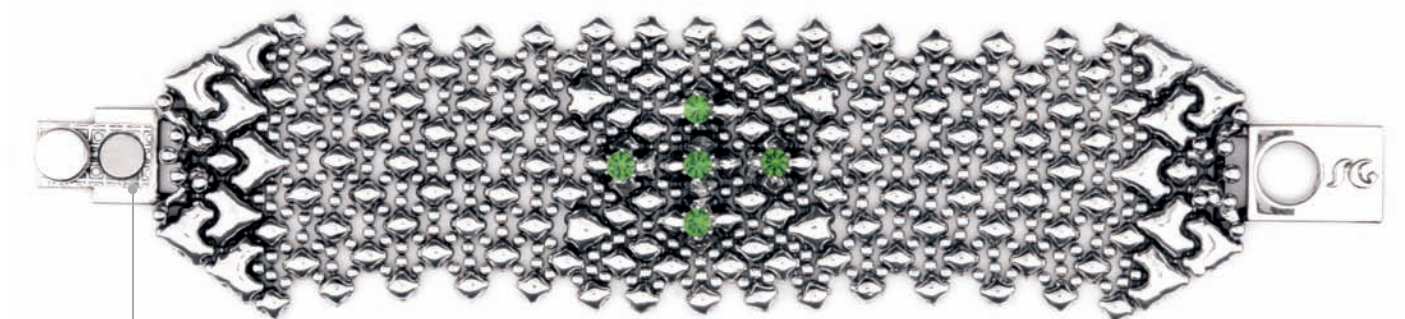
RTB14

- Crystal
- L. Rose
- Aqua
- Tanzanite



RTB17

- Crystal
- Rose
- Topaz
- Aqua
- Siam
- Emerald



RTB15

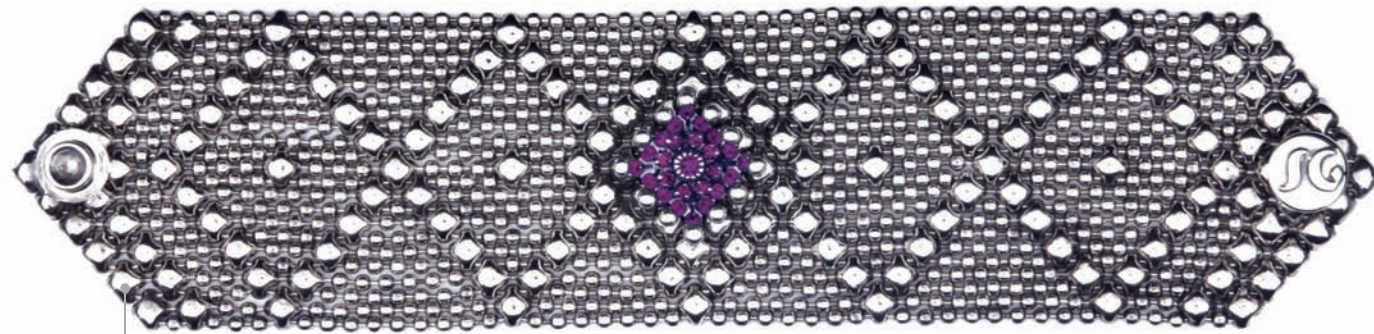
- Zirconia
- Emerald
- Peridot
- Topaz
- Pink Tour
- Ruby
- Aqua
- Blue. Sa



RTB18

\* Available only in crystal.





RSB10



RSB7



RSB77



Black



Crystal



Siam



Montana



Olive



Amethyst

BEAUTY  
&  
ORIGINALITY  
ARE PRINCIPAL DRIVING FORCES FOR US.

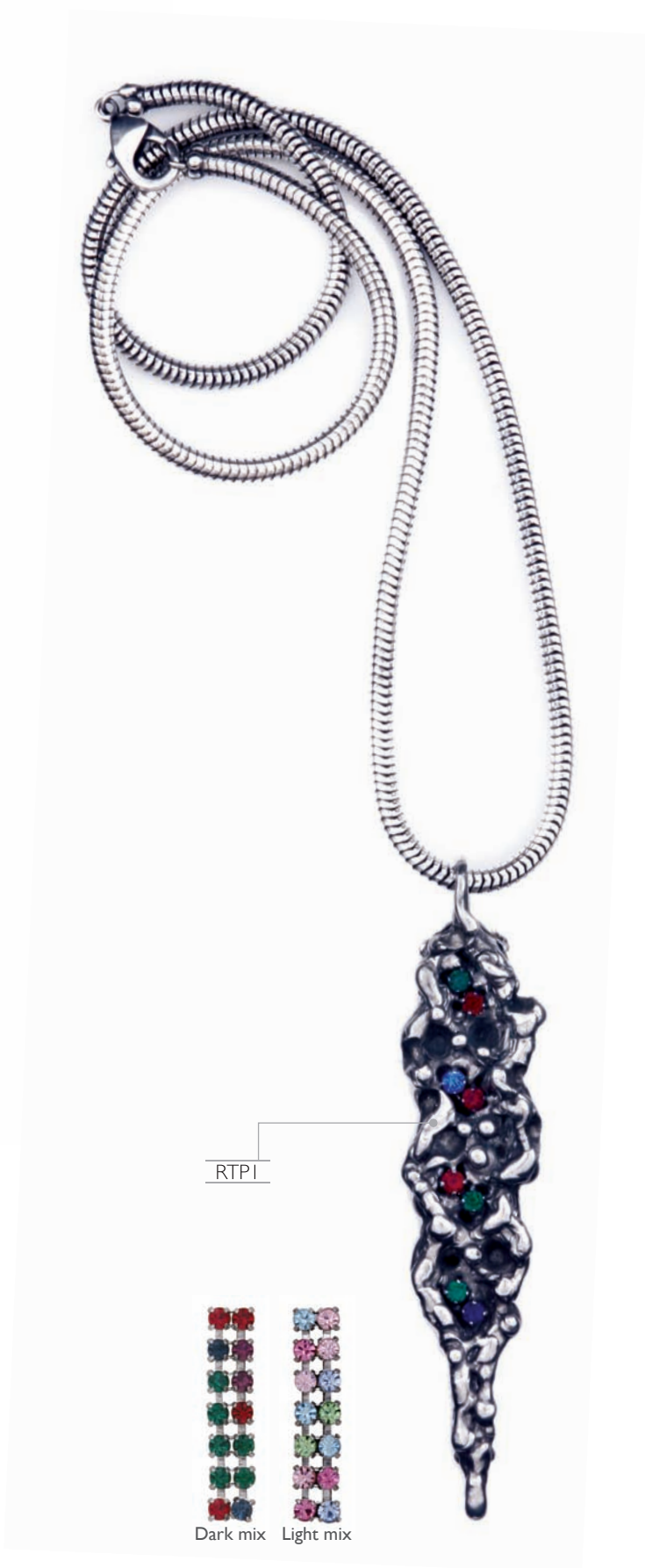






RTCRI

- Zirconia
- Emerald
- Peridot
- Topaz
- Pink Tour
- Ruby
- Aqua
- Blue. Sa



RTPI

- Dark mix
- Light mix

## RINGS & EARRINGS



RTR1



RTR2

- Zirconia
- Emerald
- Peridot
- Topaz
- Pink Tour
- Ruby
- Aqua
- Blue. Sa



RTR3

- Crystal
- L. Amethyst
- Erinite
- Tanzanite



RTR4

- Crystal
- L. Rose
- Aqua
- Tanzanite



RTE1



RTE3



RTE2

- Zirconia
- Emerald
- Peridot
- Topaz
- Pink Tour
- Ruby
- Aqua
- Blue. Sa



# NECKLACES







- Zirconia
- Emerald
- Peridot
- Topaz
- Pink Tour
- Ruby
- Aqua
- Blue. Sa







RTN6



Zirconia



Emerald



Peridot



Topaz



Pink Tour



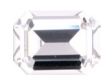
Ruby



Aqua



Blue. Sa



Crystal



Rose



Topaz



Aqua



Siam



Emerald

RTN5







RTCI

|   |   |   |   |
|---|---|---|---|
|  |  |  |  |
| Crystal   | L. Rose   | Aqua  | Tanzanite   |

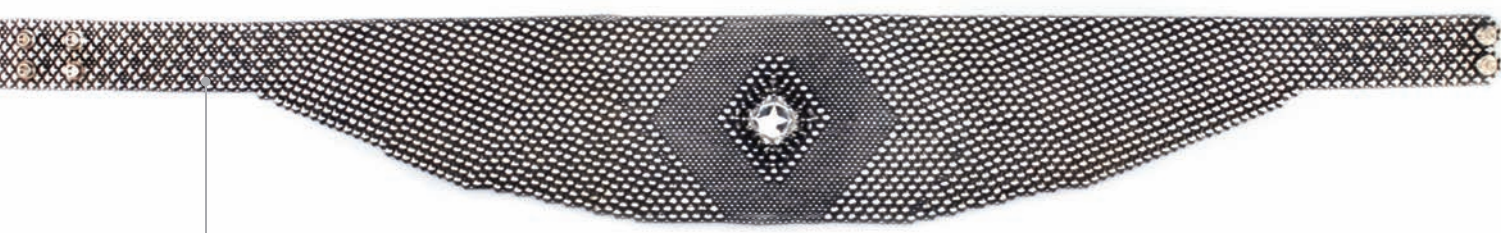
  

|   |   |   |   |
|---|---|---|---|
|  |  |  |  |
| Zirconia  | Emerald   | Peridot   | Topaz   |
|  |  |  |  |
| Pink Tour   | Ruby  | Aqua  | Blue. Sa  |

RTBI9



BELTS



RTBelt 1  
\* Available only in crystal.



RTBelt 2



RTBelt 3



\* Center stone only available in crystal.







LIQUID CLASSIC





# BRACELETS

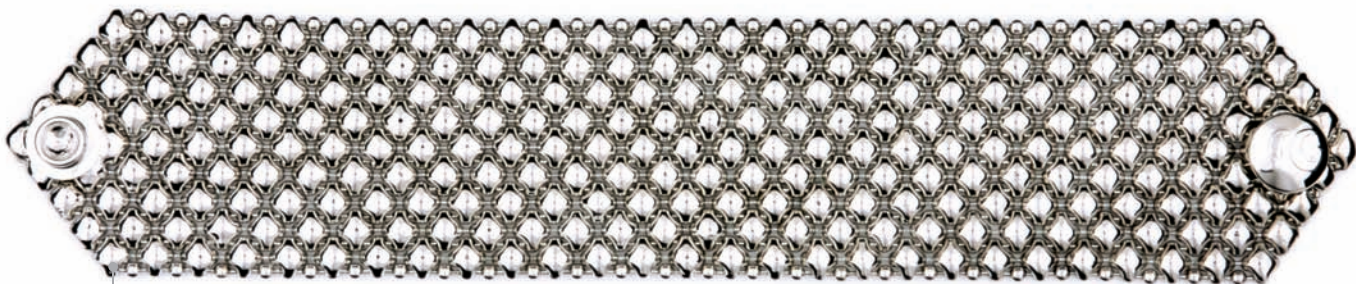
The Liquid Metal mesh classic collection is known for it's unique soft and fluid mesh.  
 These bracelets will always be classics.



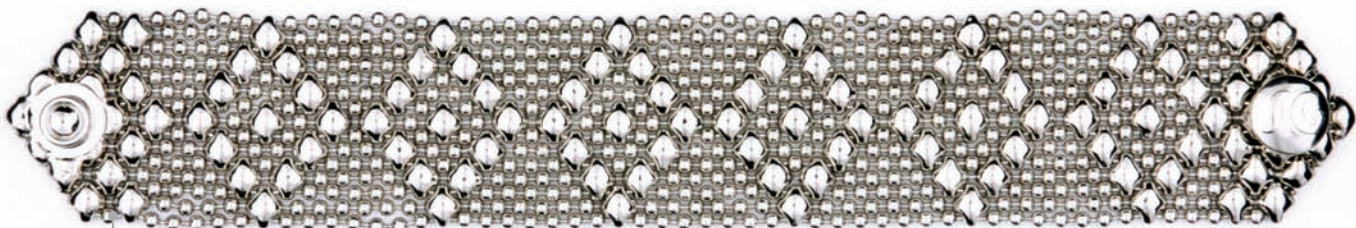
B3



B4



B8



B9



B10

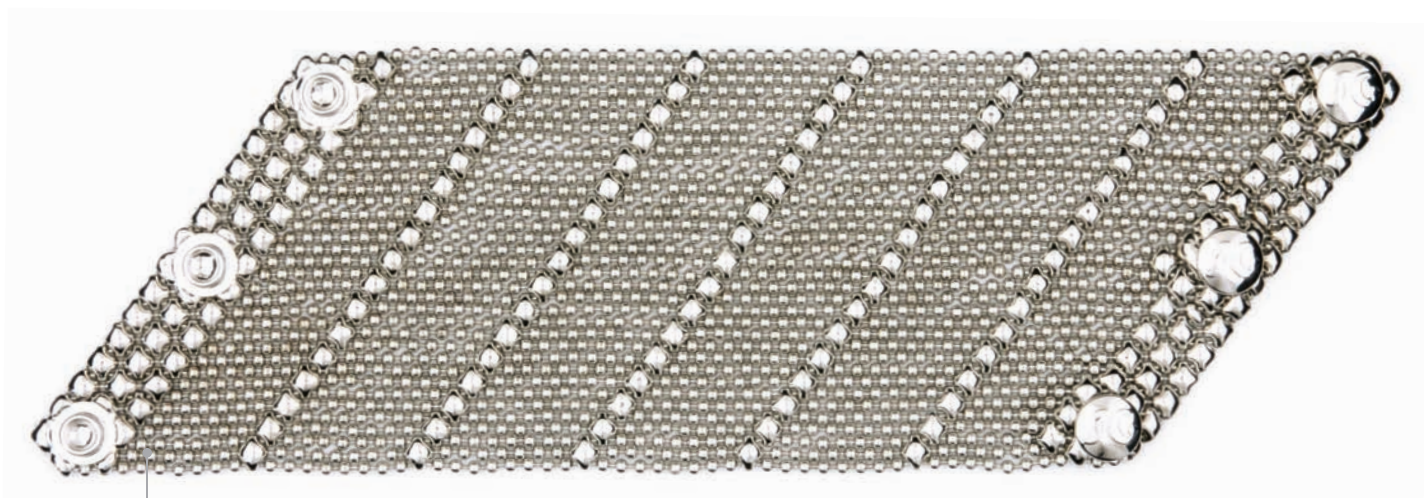


B11



B26





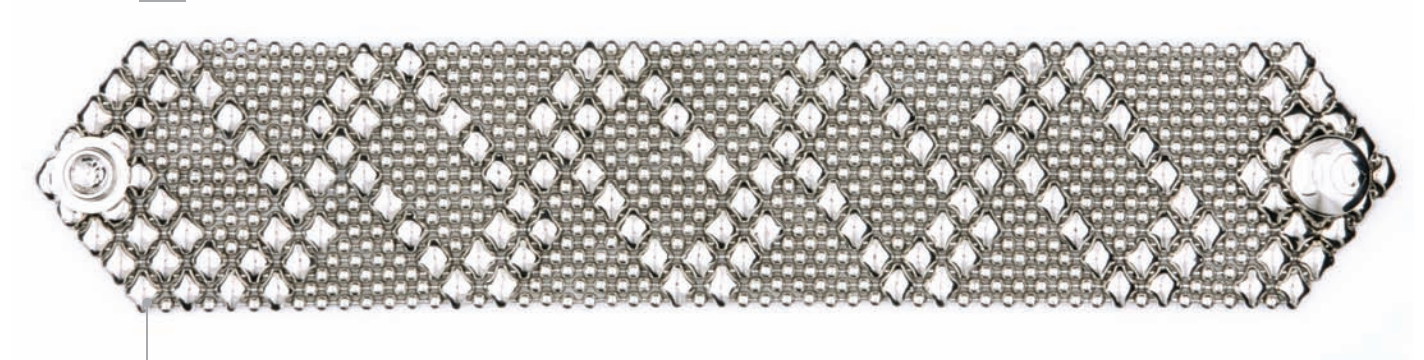
B27



B44



B45



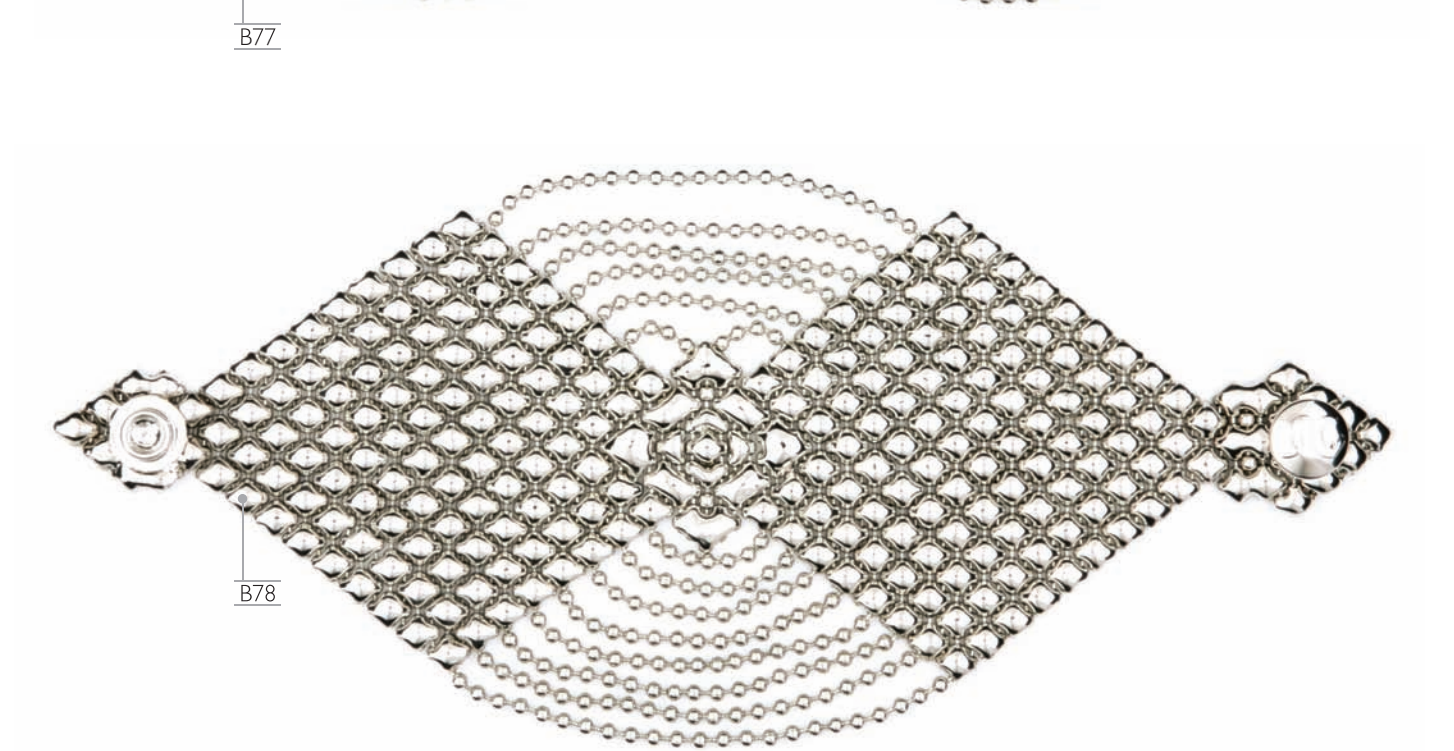
B46



B50

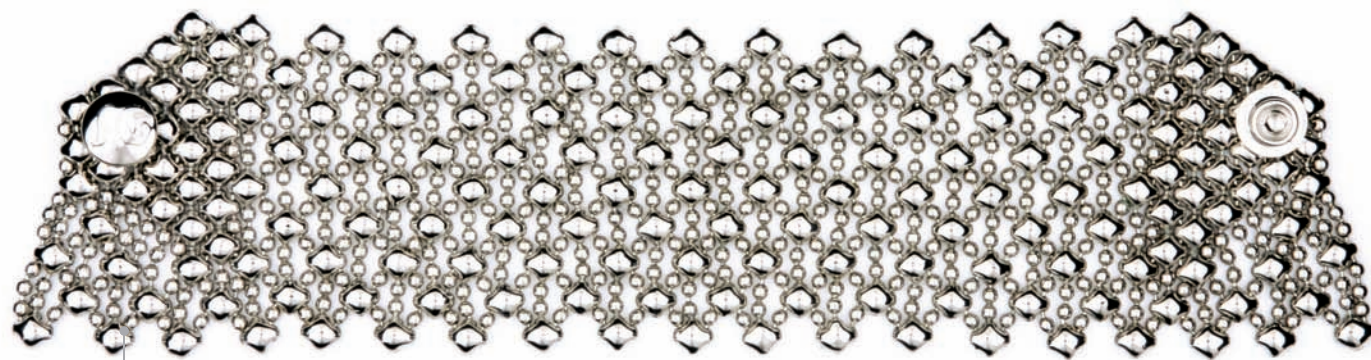


B77

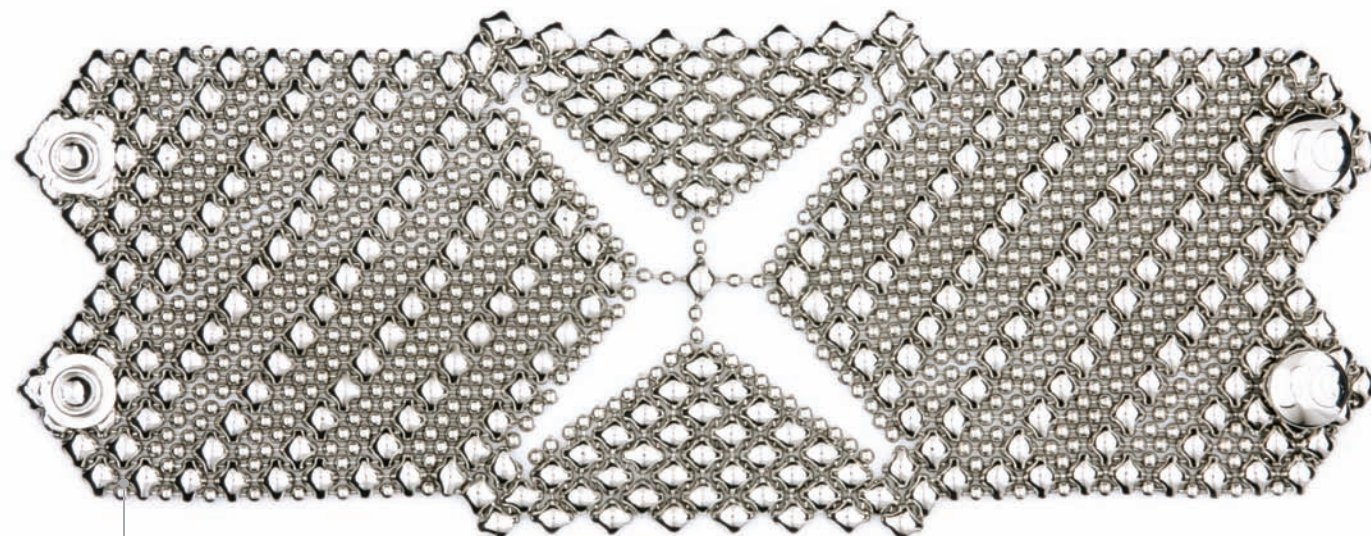


B78





B79



B80



B81

## MAGNETIC CLOSURES

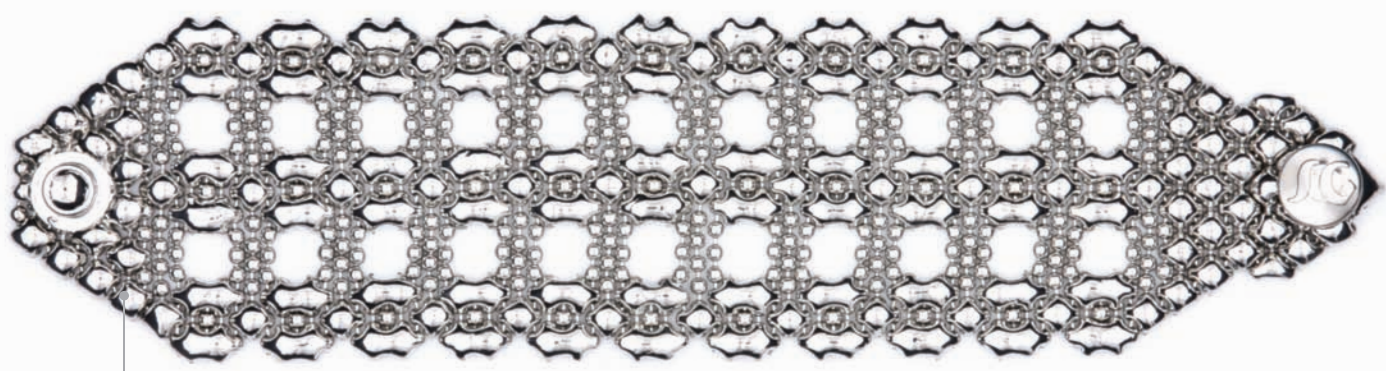
Bracelets like this one have a well-designed strong high quality magnetic closure that's sleek and comfortable to wear.







B82



B83



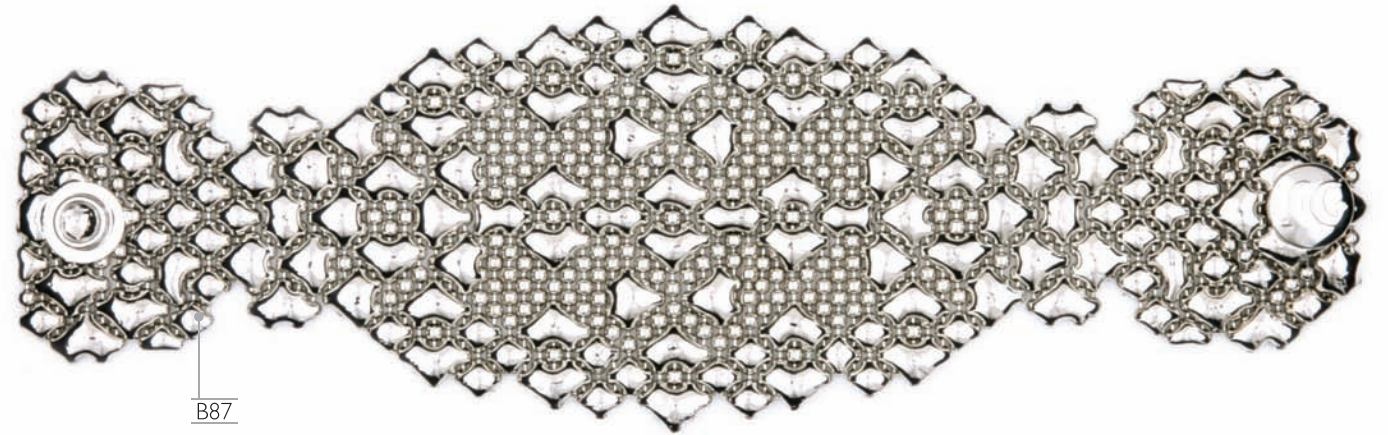
B84



B85



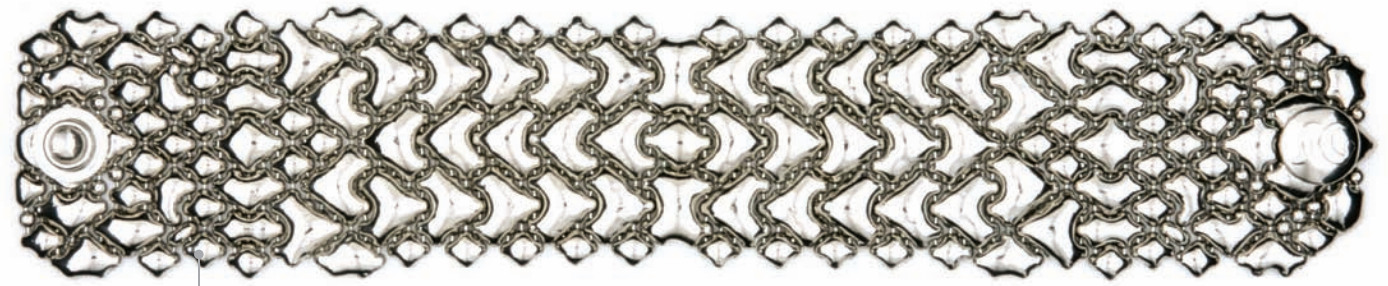
B86



B87



B88



B89



B90





# NEW

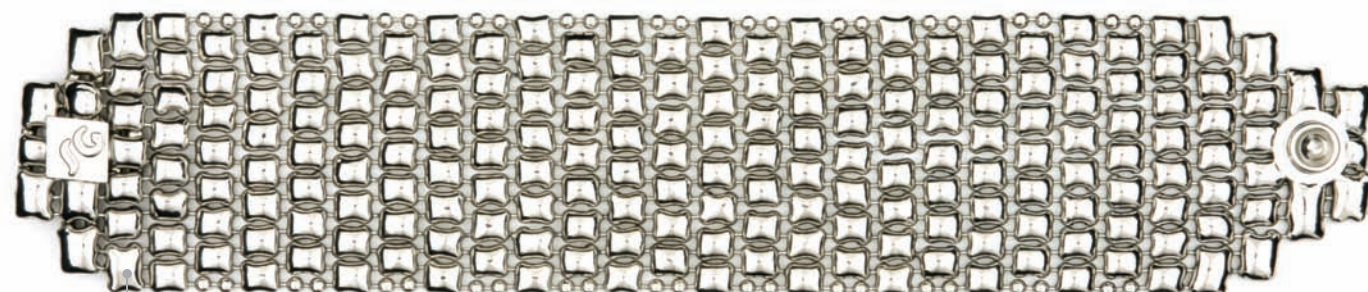
## MINI MAGNETIC CLOSURES

These bracelets have new mini magnetic closures. They are also available for men.

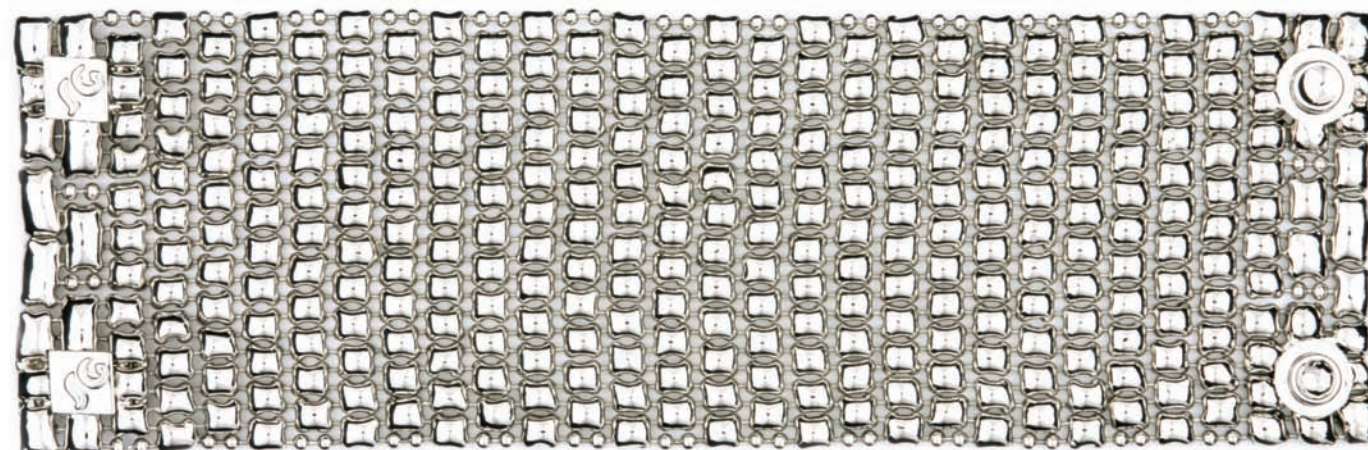




These bracelets have a distinctive soft square mesh design.  
CQ2 is the corresponding choker 14 1/2" long & 1" wide.



BQ2

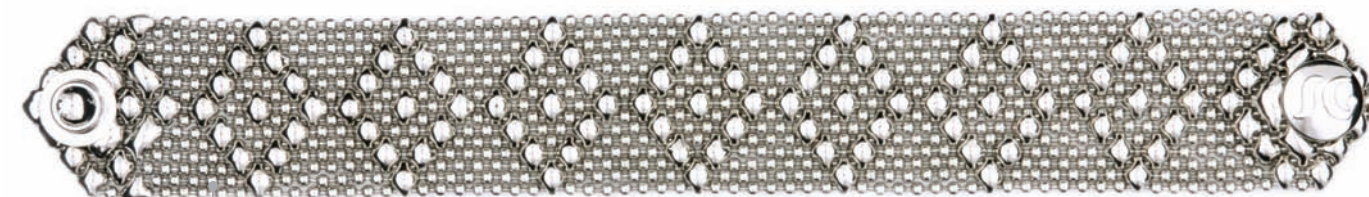


BQ3



CQ2

Tiny Ball Chain Mesh. The items on pages 40, 41 & 42 are made of the smallest ball chain available resulting in a magnificent soft smooth silky mesh like no other.  
Customers appreciate the lightweight and delicate mesh in these pieces.



TB9

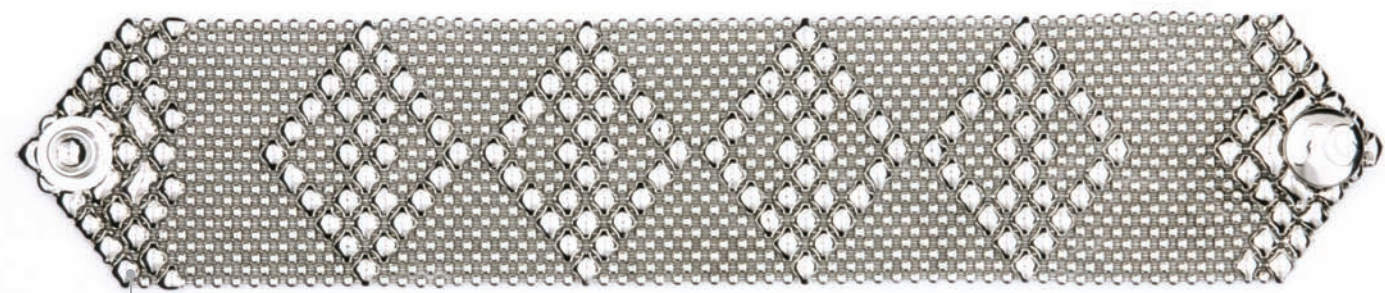


TB27



TB32





TB33



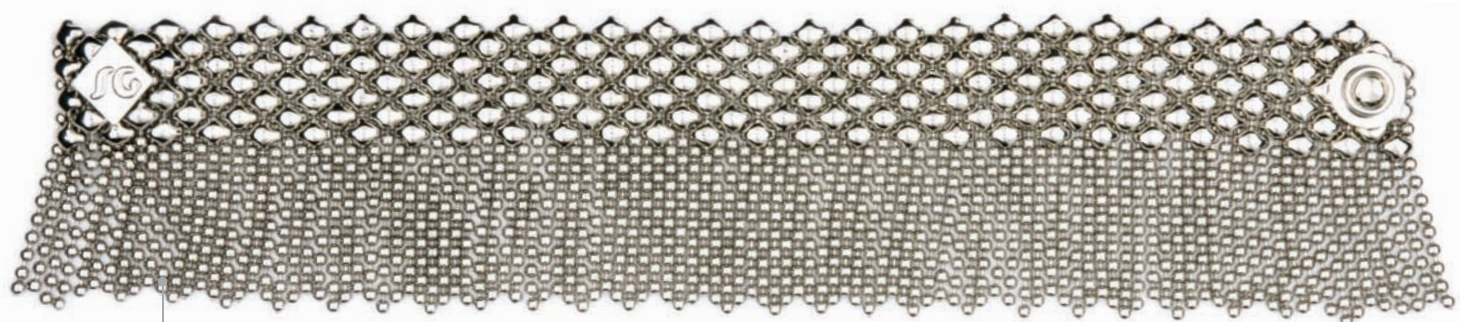
TB34



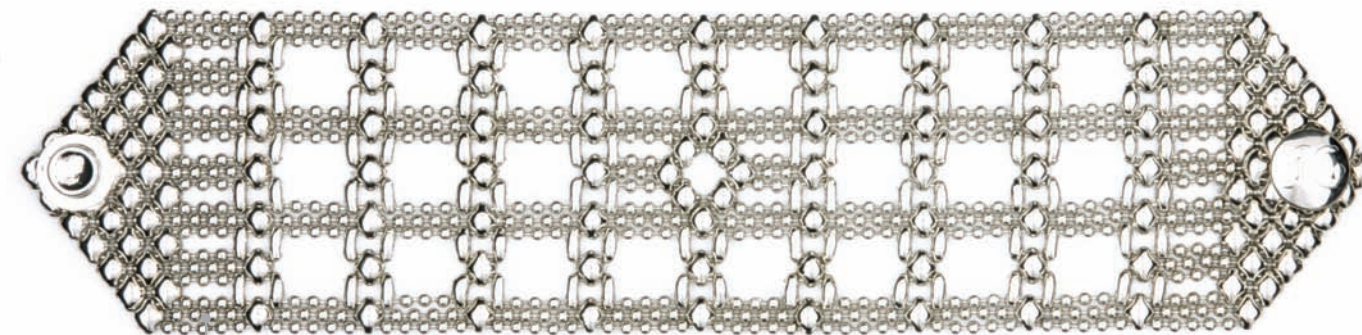
TB35



TB36



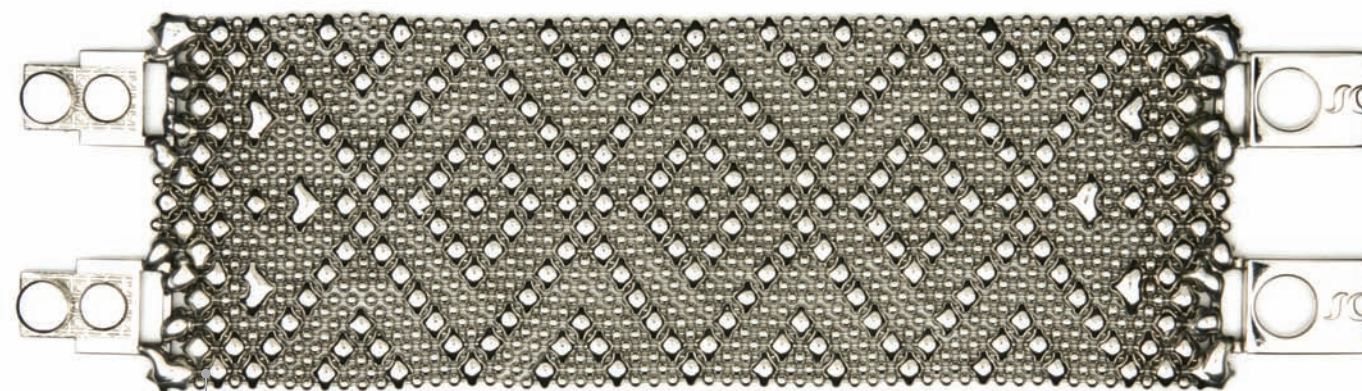
TB37



TB38



TB39



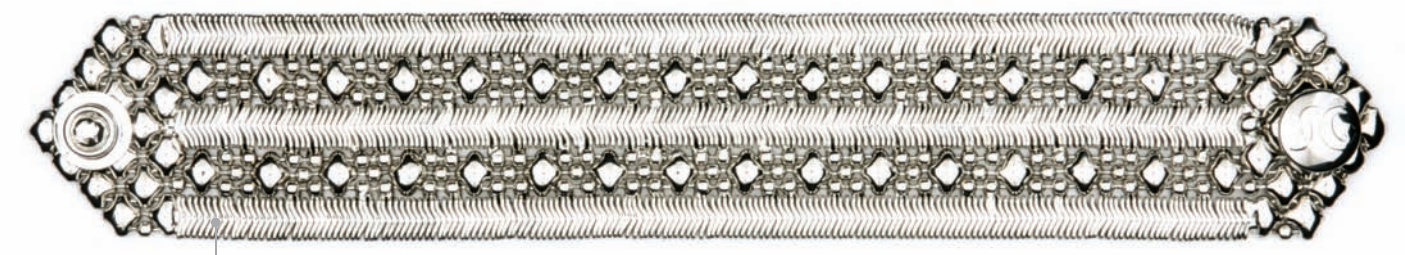
TB40

TB40 is the widest bracelet of our Tiny Ball Chain Series. Wearing it is a fantastic silky feeling.

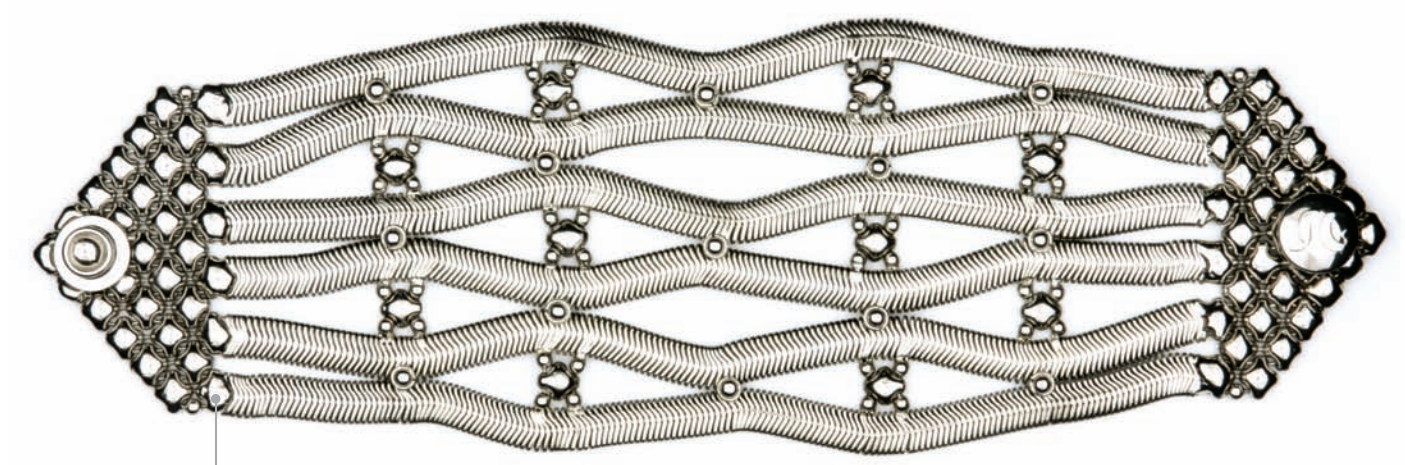




# SNAKE COLLECTION



SNB1



SNB4



SNB14





## NECKLACES



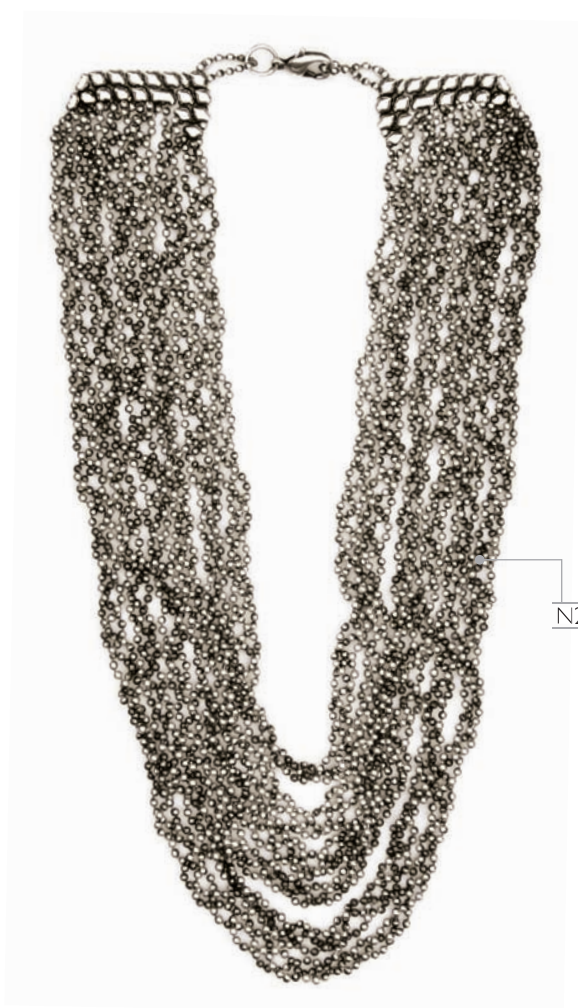




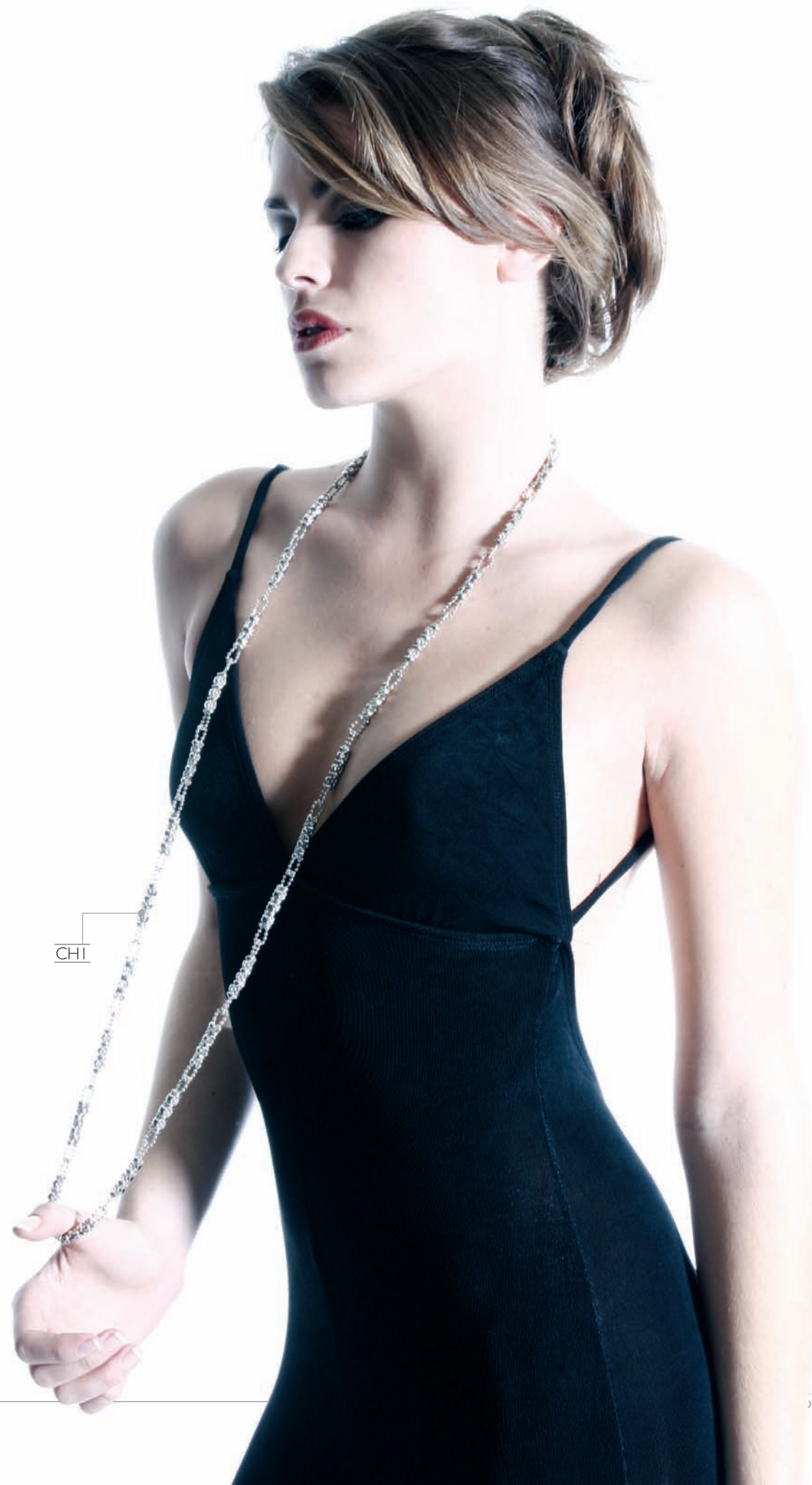
N17



N18



N20



CHI



# EARRINGS & RINGS



E32



E37



E7



E34



E40



E38



E39



E41



E43



E42



E30



E16



E15



E11



E17



E31



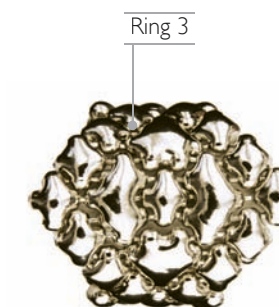
E14



Ring 1



Ring 2



Ring 3



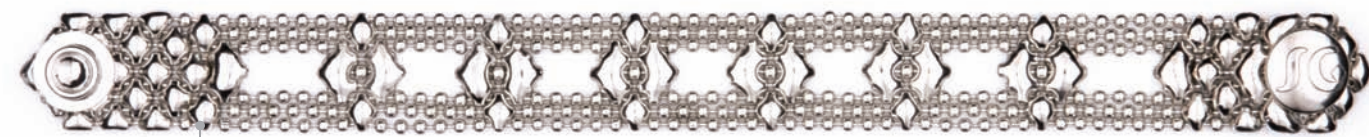
## THE MINI COLLECTION



Mini A



Mini C



Mini D



Mini E



Mini K



Mini J



Mini G



## PURSES



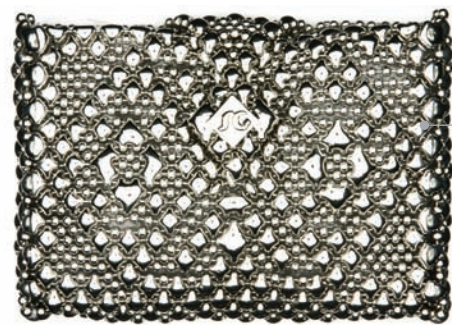
Mini PSI



PS15



PS4



MPS14



PS5

PS10







These two items have beautiful  
white leather lining and  
a zipper closure.





PS20

Comes with white leather lining  
zipper and magnetic closure.



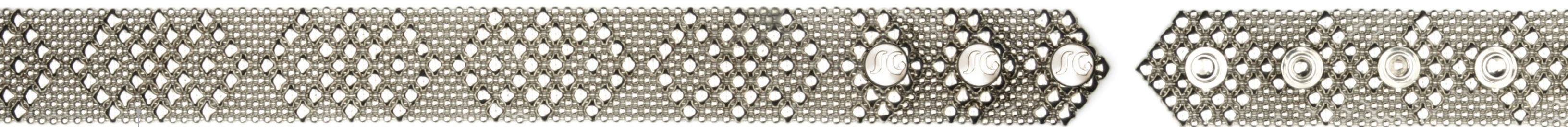
Mesh Backpack



# BELTS



Mini Belt 2



Belt 1



Belt 2





← Belt B88

← Belt BT18

← Belt B89



# CHOKERS



C32



C30

C31







LIQUID LEATHER

SG



## LEATHER BRACELETS

These Bracelets come with an easy to use magnetic closure and safety bar that keeps it securely locked.

\* Leather bracelets come in all colors. (See color chart page 80)



LTBT1 Black



LTBT2 Red suede



LTBT3B Black



LTBT5 Orange suede



LTBT3A Off white



LTBT4 Camouflage suede



LTBT6 Pink suede



LTBT7 Black



LTBT9 Olive suede



LTBT11 Turquoise suede



LTBT13 Black suede



BT14Mix2



LTBT8 Pink suede



LTBT10 Cheetah



LTBT12 Camel suede

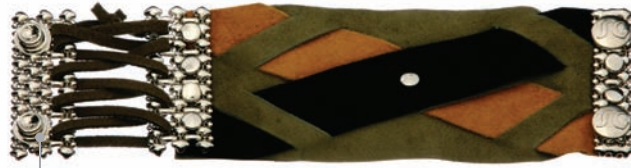


BT14Mix1



BT14Mix3

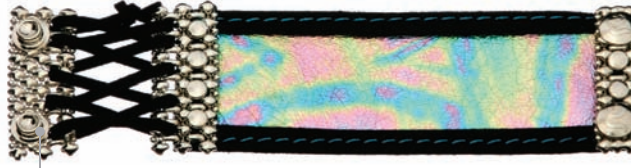




BT14Mix4



BT15 Turquoise suede



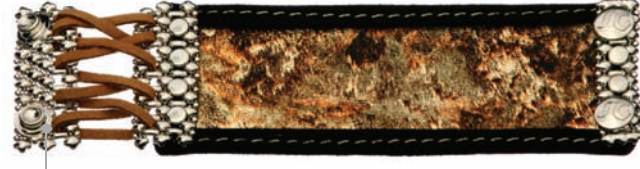
BT16TM020



BT16 Terracota



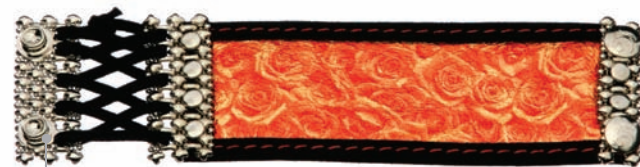
BT16 Pink suede



BT16TM032



BT16TM021



BT16TM022



BT17 Black suede



BT18 Black

Snap and lace bracelets are adjustable to your wrist size making it very easy to have a perfect and comfortable fit for every one.



\* Leather bracelets come in all colors. (See color chart page 80)



# LEATHER BELTS



LTBelt 4 Off white



LTBelt 1 Red suede



LTBelt 2 Camel suede



LTBelt 3 Olive suede

\* Leather Belts come in all colors. (See color chart page 80)







## LEATHER BAGS



LTBAG2 Black and Off white



LTBAG1 Orange suede



LTBAG9 Off white



LTBAG6 Black suede



LTBAG3 Red suede

\* Leather bags come in all colors. (See color chart page 80)





LTBAG4 Olive



LTBAG7 Camouflage suede



LTBAG10 Black



LTBAG5 Pink suede



LTBAG8 Camel suede

\* Leather bags come in all colors. (See color chart page 80)



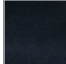

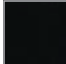
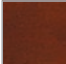

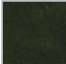







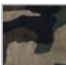


LTBAG11 Red suede



LTBAG12  
\* Only comes in Black leather.

## LEATHER COLOR CHART

|   |              |   |                  |
|---|--------------|---|------------------|
|    | Black        |    | Burgundy         |
|    | Black suede  |    | Terracota suede  |
|    | Off white    |    | Olive Suede      |
|  | Pink suede   |  | Brown            |
|  | Red suede    |  | Tourquoise suede |
|  | Orange suede |  | Cheetah          |
|  | Camel suede  |  | Camouflage suede |





LIQUID MICROCHIP





**LIQUID MICROCHIPS.** This collection is made of the “SKELETONS” of computer microchips. All microchips are unique amongst themselves, therefore no two-finished pieces are the same.

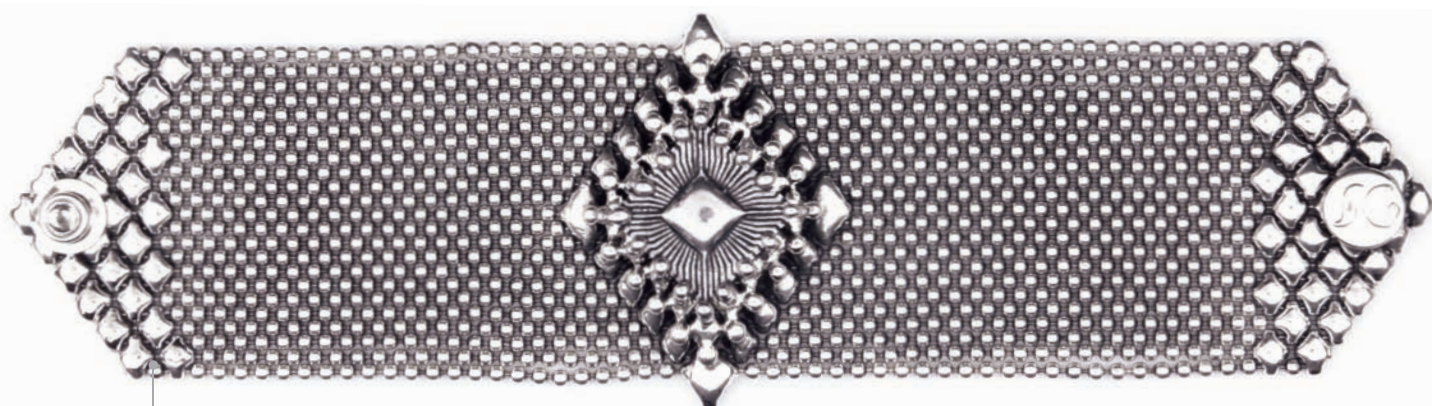
Patent # US 6,536,112 B1 relates to a process for making a decorative device to be incorporated in jewelry or other objects that will be worn or carried by a person.



XX1



XX5



XX6



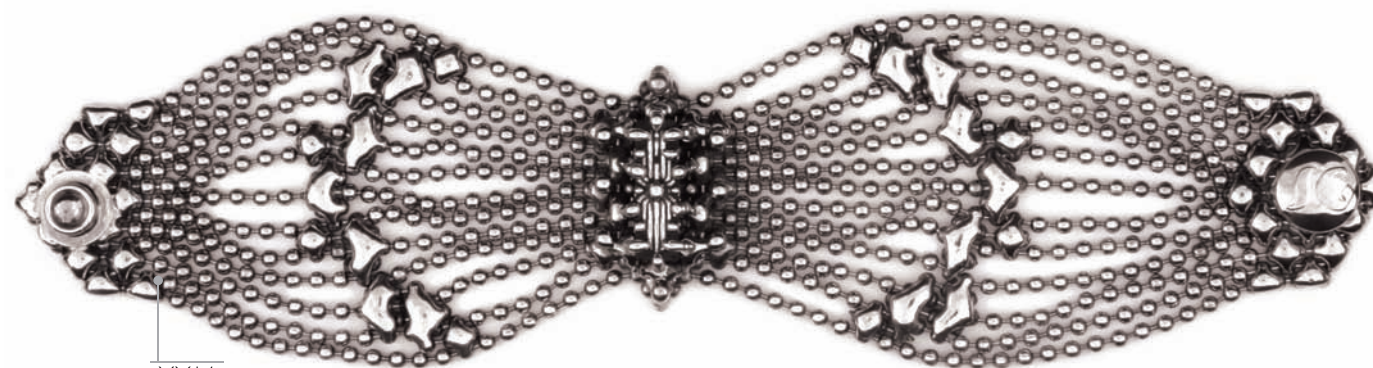
XX10



XX11



XX12



XX14



# NECKLACES







XCR1



XCR2



XCR3



## BELTS

XBELT 2

XBELT 1





XBELT 4





LIQUID FASHION





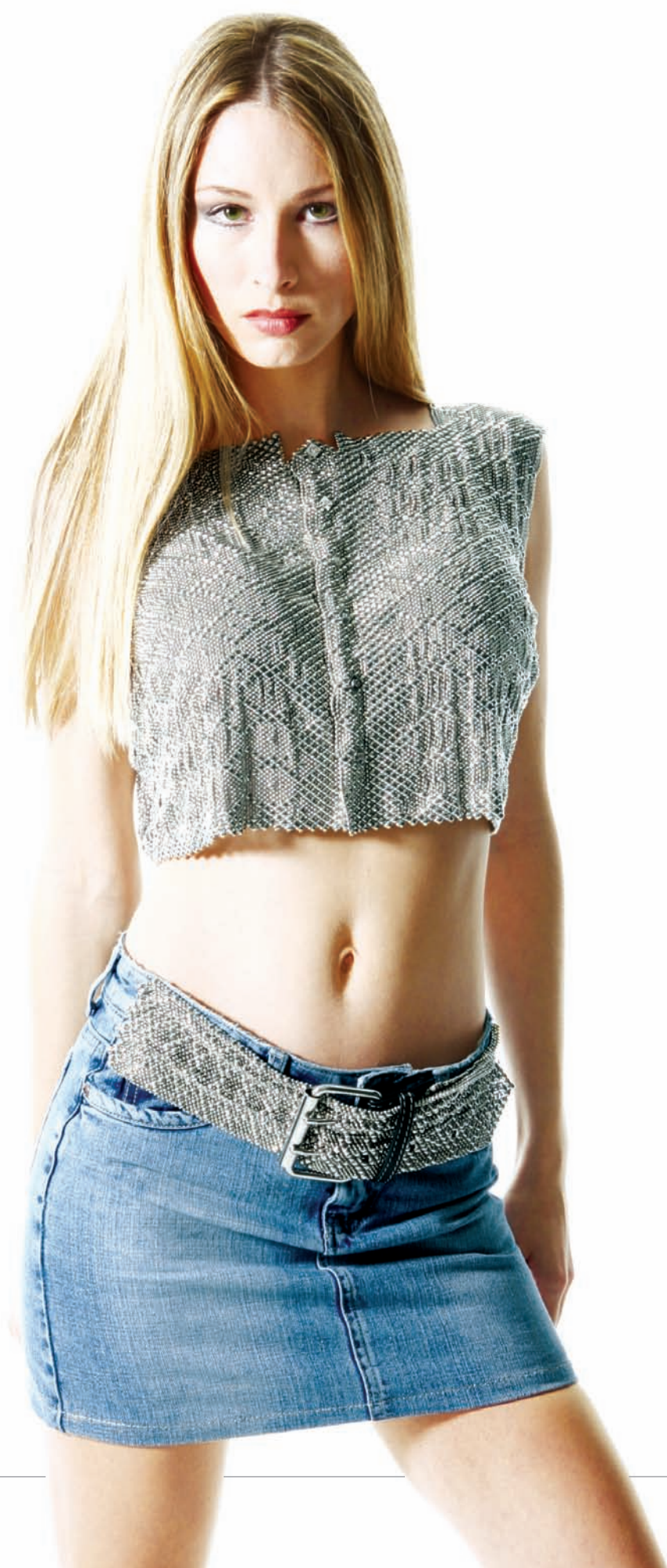


Headpiece 1



Dress 2B & XBelt 2





Vest 3 & Mini Skirt C



Mini Skirt B



Dress 1A & Belt BT18





Vest 4 & G String



Bra 1 & Mini Skirt 1



Vest 2 & C31 Choker





Jeans Z & LT Belt 3 Olive suede



Bra 2 & Jeans G with Swarovski crystals (see page 13)



Jeans A & Vest 1 (back and front)





Headpiece 2



Bra 3 & Mini Skirt 2

Bra 2 & Mini Skirt 3







Mini Skirt 3



Bra 2 & G String





LT Vest I (leather vest) & Jeans Z (both)

Jacket I (front and back)





---

## SERGIO GUTIERREZ

---

Sergio Gutierrez was born in Colombia in 1965. He studied electronic engineering while living in Medellin, Colombia. In 1991 he moved to San Francisco where he began researching ways of using ball chain to create a mesh like fabric. After two years he developed what is now the basis of his Liquid Metal Mesh line of jewelry and accessories. In 1994 designer Betsy Johnson was the first who approached Sergio

about creating exclusive designs for her chain of retail stores. She carried his line for two years.

In 1996 he relocated to Miami. Soon thereafter his company began growing with the addition of Nordstrom, Bebe and Cache to his client list.

Sergio's creativity and dreams for his business continued. He developed techniques for incorporating his Liquid Metal Mesh with leather bags, bracelets, belts and jackets along with jeans, pants and skirts. In 2003 he was granted a patent for creating a unique technique he named, "Liquid Microchip". Electronic circuitry components have been altered to resemble the most delicate intricate decorative elements. Sergio fondly refers to them as the "skeletons of today's inside technology". These "skeletons" are incorporated into his mesh objects collection and leather items.

His designs are collected and worn by celebrities such as Demi Moore, Cher, Patricia Wettig, Marilyn Manson, Sara Michelle Gellar, Tony Braxton, Sharon Stone, Thalia, Tyra Banks, Julie Warner and many more. People who wear his jewelry and accessories daily as if they were an extension of themselves, value the comfort and uniqueness of the wonderful mesh designs Sergio has created.